

WEBELOS EARTH ROCKS! REQUIREMENTS

Complete the following requirements.

1. Do the following:

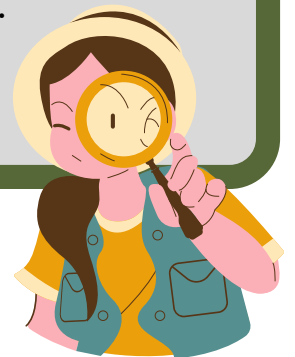
- Explain the meaning of the word “geology.”
- Explain why this kind of science is an important part of your world.



2. Look for different kinds of rocks or minerals while on a rock hunt with your family or your den.

3. Do the following:

- Identify the rocks you see on your rock hunt. Use the information in your handbook to determine which types of rocks you have collected.
- With a magnifying glass, take a closer look at your collection.
Determine any differences between your specimens.
- Share what you see with your family or den.



4. Do the following:

- With your family or den, make a mineral test kit, and test minerals according to the Mohs scale of mineral hardness
- Record the results in your handbook

5. Identify on a map of your state some geological features in your area.

6. Do the following:

- Identify some of the geological building materials used in building your home
- Identify some of the geological materials used around your community

HELPFUL RESOURCES

[What Is Geology?](#)

[Identifying Geological Features](#)

[Going on a Rock Hunt](#)

[Geological Materials in the Home](#)

[What Is the Mohs Scale?](#)

[Geological Materials in the Community](#)




For additional information and resources, see

<https://scoutermom.com/24593/webelos-earth-rocks-adventure-cub-scout/>

WEBELOS EARTH ROCKS! CHECK OFF SHEET

Complete the following requirements

 <div style="text-align: right; padding-right: 10px;">Name</div>										
Adventure Requirements										
1A. Explain the meaning of the word “geology.”										
1B. Explain why this kind of science is an important part of your world.										
2. Go on a rock hunt.										
3A. Identify the rocks you see on your rock hunt.										
3B. Take a closer look at your collection.										
3C. Share what you see with your family or den.										
4A. Make a mineral test kit.										
4B. Record the results in your handbook.										
5. Identify local geological features on a map.										
6A. Identify some of the geological building materials used in building your home.										
6B. Identify some of the geological materials used around your community.										
Completed										
Award presented										

For additional resources for the requirements, see

<https://scoutermom.com/24593/webelos-earth-rocks-adventure-cub-scout/>